

Product Highlights

Eco-friendly and Economical

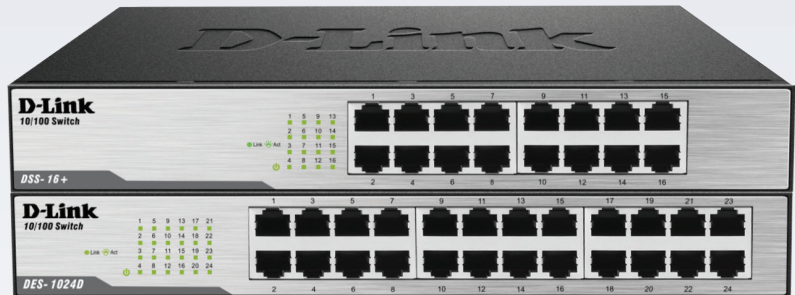
Low-cost, innovative design runs reliably and quietly, saving energy and cutting costs without sacrificing connectivity

High-speed Networking

Fast Ethernet ports allow network expansion and device connectivity for quick file transfers and smooth media streaming

Saves Energy

Environmental features reduce energy consumption and costs, while compliance certifications provide peace of mind



DSS-16+ and DES-1024D

16 and 24 Port 10/100 Unmanaged Rackmount Switches

Features

Green Features

- IEEE802.3az EEE (Energy Efficient Ethernet)
- RoHS compliant

Standards

- IEEE 802.3 10BASE-T Ethernet (twisted-pair copper)
- IEEE 802.3u 100BASE-TX Fast Ethernet (twisted pair copper)
- IEEE 802.3az Energy-Efficient Ethernet (EEE)
- ANSI/IEEE 802.3 NWay auto-negotiation

Versatile Support

- Plug-and-play installation
- Full/half-duplex for Ethernet/Fast Ethernet speeds
- IEEE 802.3x Flow Control

Overview

The D-Link DSS-16+ and DES-1024D 16 and 24-Port 10/100 Unmanaged Rackmount Switches allow expansion of business and home networks by adding more computers, printers and other networking devices. Each switch can achieve speeds up to 200 Mbps per port in full-duplex mode. Using the DSS-16+ and DES-1024D switches, IT professionals can quickly and securely connect employees working in small offices with all of the servers, printers, and other devices they use. With high performance and reliable connectivity, these economical 10/100 switches help speed file transfers and data processing, improve network uptime, and keep employees connected and productive.

Expand and Upgrade Network Resources

DSS-16+ and DES-1024D switches offer an economical way for SOHO and small to medium businesses (SMB) to benefit from high-speed networking. Each provides sixteen or twenty-four ports for easy expansion of the network and a quick way to upgrade to Fast Ethernet connectivity. The switches speed file transfer times, improve slow and sluggish networks, keep vital business applications available, and help employees respond more quickly to customers and each other.

Conserve Energy



The DSS-16+ and DES-1024D switches help conserve energy through IEEE802.3az EEE, which works when both the switch and its link partner are EEE-compliant devices. This power saving feature automatically puts the switch into a low power idle state when the switch utilization is zero, allowing lower energy usage and saving on energy costs.

Designed with the Environment in Mind

The switches use recyclable packaging that helps reduce waste, complying with the WEEE directive. They are innovatively designed to run cool and quiet without sacrificing performance.

Limited Lifetime Warranty

D-Link offers a Limited Lifetime Warranty on the DSS-16+ and DES-1024D 16 and 24 Port 10/100 Unmanaged Rackmount Switches to further its commitment to product quality and long-term customer confidence.¹

Technical Specifications		
General	DSS-16+	DES-1024D
		
Hardware version	K1	G1
Number of 10/100BASE-T (RJ45) ports	16	24
Port Standards & Functions	IEEE 802.3 10BASE-T Ethernet IEEE 802.3u 100BASE-TX Fast Ethernet ANSI/IEEE 802.3 NWay auto-negotiation IEEE 802.3x flow control IEEE 802.3az EEE function	IEEE 802.3 10BASE-T Ethernet IEEE 802.3u 100BASE-TX Fast Ethernet ANSI/IEEE 802.3 NWay auto-negotiation IEEE 802.3x flow control IEEE 802.3az EEE function
Data Transfer Rates	Fast Ethernet: • 100 Mbps Half-Duplex • 200 Mbps Full-Duplex Ethernet: • 10 Mbps Half-Duplex • 20 Mbps Full-Duplex	Fast Ethernet: • 100 Mbps Half-Duplex • 200 Mbps Full-Duplex Ethernet: • 10 Mbps Half-Duplex • 20 Mbps Full-Duplex
Performance and Functionality		
Packet Filtering/ Forwarding Rate	148,800 pps for 100M 14,880 pps for 10M	148,800 pps for 100M 14,880 pps for 10M
Switching Fabric	3.2 Gbps	4.8 Gbps
Network Cables	10BASE-T: • UTP CAT 3/4/5/5e (100 m max.) • EIA/TIA-586 100-ohm STP (100 m max.) 100BASE-TX: • UTP CAT 5/5e (100 m max.) • EIA/TIA-568 100-ohm STP (100 m max.)	10BASE-T: • UTP CAT 3/4/5/5e (100 m max.) • EIA/TIA-586 100-ohm STP (100 m max.) 100BASE-TX: • UTP CAT 5/5e (100 m max.) • EIA/TIA-568 100-ohm STP (100 m max.)
Media Interface Exchange	Auto MDI/MDIX adjustment for all ports	Auto MDI/MDIX adjustment for all ports
LED Indicators	Per port: • Link/Activity Per device: • Power	Per port: • Link/Activity Per device: • Power
Transmission Method	Store-and-forward	Store-and-forward
MAC Address Table	8K entries per device	8K entries per device
MAC Address Learning	Automatic update	Automatic update
Topology	Star	Star
Protocol	CSMA/CD	CSMA/CD

DSS-16+ and DES-1024D

16 and 24 Port 10/100 Unmanaged Rackmount Switches

Physical & Environmental		
Dimensions	11.1 x 5.91 x 1.73 inches (282 x 150 x 44 mm)	11.1 x 5.91 x 1.73 inches (282 x 150 x 44 mm)
Weight	2.34 lbs (1.06 kg)	2.51 lbs (1.14 kg)
Power Consumption	Standard Power Consumption: 0.9 Watts Maximum Power Consumption: 2.1 Watts	Standard Power Consumption: 1.17 Watts Maximum Power Consumption: 2.8 Watts
Heat Dissipation	Maximum Heat Dissipation: 7.1652 BTU/h	Maximum Heat Dissipation: 9.5536 BTU/h
MTBF	492,096 hours	810,880 hours
Temperature	Operating: 32°F to 104°F (0°C to 40°C) Storage: 14°F to 158°F (-10°C to 70°C)	Operating: 32°F to 104°F (0°C to 40°C) Storage: 14°F to 158°F (-10°C to 70°C)
Humidity	Operating: 10% to 90% non-condensing Storage: 5% to 90% non-condensing	Operating: 10% to 90% non-condensing Storage: 5% to 90% non-condensing
Certifications	CE FCC ICES-003 BSMI RCM	CCC VCCI cUL CB LVD
CE	CCC	CE
FCC	VCCI	FCC
ICES-003	cUL	ICES-003
BSMI	CB	BSMI
RCM	LVD	RCM
CCC		CCC
VCCI		VCCI
cUL		cUL
CB		CB
LVD		LVD
Ordering Information		
Model number	Description	Warranty
DSS-16+	16 Port 10/100 Unmanaged Rackmount Switch	Limited Lifetime ¹
DES-1024D	24 Port 10/100 Unmanaged Rackmount Switch	Limited Lifetime ¹

¹ Limited Lifetime Warranty available in U.S.A. only. Warranty void when not purchased from Authorized US D-Link Reseller. Please visit us.dlink.com for list of Authorized US Resellers.

UPDATED 11-APR-2018 (SMO)

HARDWARE REV K (DSS-16+) HARDWARE REV G (DES-1024D)

DSS-16+_DES-1024D_REVKG_DATASHEET_2.00_EN_US.PDF

FOR MORE INFORMATION

U.S.A. | 17595 MT. HERRMANN STREET | FOUNTAIN VALLEY, CA 92708 | 800.326.1688 | DLINK.COM

©2018 D-Link Corporation/D-Link Systems, Inc. All rights reserved. D-Link and the D-Link logo are registered trademarks of D-Link Corporation or its subsidiaries in the United States and/or other countries. Other trademarks or registered trademarks are the property of their respective owners.

All references to speed are for comparison purposes only. Product specifications, size and shape are subject to change without notice, and actual product appearance may differ from that depicted herein.

Visit us.dlink.com for more details.

D-Link[®]
Building Networks for People