



## Product Highlights

### Reliable, Secure Network

Self-healing and self-optimizing technology combined with 4+4 wireless controller redundancy and RF scanning ensures reliability and performance.

### Easy Guest Management

Features such as account generation, ticket issuance, user monitoring, and session extension make for a convenient wireless solution.

### Scalable Network Architecture

To meet evolving network demands, access point management can be upgraded from 64 to 256 APs per controller.



## DWC-2000

# Unified Wireless Controller

## Features

### Network Architecture

- Manage up to 64 wireless APs. Upgradable to 256 APs per controller<sup>1</sup>
- Maximum 1024 APs per Peer Group (up to 4 controllers)<sup>1</sup>

### Robust Network Security

- Wireless Intrusion Detection System (WIDS)
- Rogue AP Detection & Classification
- Captive Portal
- 802.1x

### Guest Management

- Ticket generation
- Payment gateway
- Account monitoring and extension

### Compatible D-Link Unified Wireless Access Points

- DWL-8610AP (802.11 a/b/g/n/ac)
- DWL-8600AP (802.11 a/b/g/n)
- DWL-6600AP (802.11 a/b/g/n)
- DWL-3600AP (802.11 b/g/n)
- DWL-2600AP (802.11 b/g/n)

## Overview

The D-Link DWC-2000 Wireless Controller is a centralized Wireless LAN manager designed specifically for education, hospitality, and medium-to-large enterprises. Out of the box, it can manage up to 64 compatible D-Link Unified Wireless Access Points. With optional upgrade licenses, it can support up to 256 access points per controller, and up to 1,024 access points in a controller peer group, making it cost-effective mobility solution suitable for medium to large scale deployments. Features such as auto-managed AP discovery and single-point management allow users to achieve enterprise class networking without the burden of executing massive and complex configurations. The guest account generation function manages guest user bandwidth and accessibility to network resources. With a robust and comprehensive security detection system, the DWC-2000 manages associated APs by blocking potential attacks from unauthorized users and appliances, which is particularly crucial in wireless environments.

## Simplified Deployment and Management

Using the Setup Wizard, the DWC-2000 can be configured for any network in minutes. Centralized management of remote access points via a simple interface provides the ability to automatically discover compatible D-Link Wireless Access Points, add them into the managed access point list, and set one-time configuration dispatch settings for them. The network administrator can use the controller clustering feature to easily log into one wireless controller and push essential configurations to others within the group.

The dashboard displays real-time monitoring of access points and associated client stations to manage network resources efficiently. Furthermore, the graphical widgets on the dashboard can be customized to provide various client and network statistics at a glance. Combined with system alarms and statistical reports on managed access points, the DWC-2000 is the one-stop platform that allows administrators to effectively optimize and manage their network environment.

## Guest Control and Management

The DWC-2000 integrates guest management features that deliver a secure and easy solution for managing access to the Internet by temporary users in a private or public network. Each temporary account, or the issued ticket, is accompanied by time-limited or data-limited Internet access privileges. The Guest Management service allows batch generation of temporary accounts, and can also provide account details to the guest via printout. Furthermore, it can monitor or extend the usage on the specific account manually after account creation and activation. By connecting with payment gateways to authorized credit card or electronic payments, guests can easily purchase the service online.

## Robust and Optimized Network

The DWC-2000 offers self-organizing, self-optimizing, and self-healing network capabilities to increase the stability of the entire wireless network. Maximum 4+4 wireless controller redundancy and AP provisioning automatically switches the AP management from the failed controller to the backup in emergency scenarios, giving your network the reliability it needs. Capable of regular radio scanning, the DWC-2000 can automatically tune radio channels and power from time to time to avoid interference and keep the wireless network optimized. To make up for a sudden RF signal vacuum created by a “dead” access point, the DWC-2000 increases the transmission output power of neighboring access points to expand RF coverage for a reliable, high performance network.

## Comprehensive Security

The DWC-2000 provides a comprehensive wireless security solution for easy integration into any network. The Wireless Intrusion Detection System (WIDS) featured in the DWC-2000 detects rogue access points, rogue clients, and can anticipate wireless threats, to help prevent potential breaches and illegal access before any damage is done to the network. In addition to fundamental wireless security, the Captive Portal feature allows you to block clients from accessing the network until their identities are verified. The Captive Portal authentication servers cover local, RADIUS, LDAP, POP3 and Windows Active Directory. This double-layer authentication and authorization establish a robust security fence to avoid attacks from internal networks.

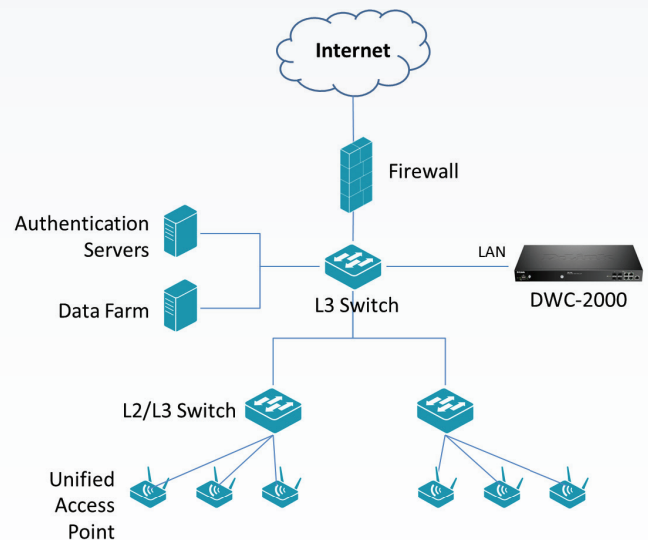
## High Scalability, Availability, and Flexibility

To address today's fast-changing corporate structures, the DWC-2000 Wireless Controller offers flexible optional features: the administrator can purchase D-Link's Business Wireless Plus license packs to upgrade the DWC-2000's capabilities. D-Link offers a range of DWC-2000 managed AP license pack upgrades to increase the number of manageable access points, depending on need. By default, the DWC-2000 manages up to 64 access points, but this can be expanded to 256 access points per controller. With the DWC-2000, as business grows, so does its wireless network.

## Limited Lifetime Warranty

D-Link offers a Limited Lifetime Warranty on the DWC-2000 Unified Wireless Controller to further its commitment to product quality and long-term customer confidence.

## Network Implementation within L2/L3 Network in Medium to Large Environments.



## Technical Specifications

### Interface

Ports	• 4 Gigabit RJ-45/SFP Combo Ports
USB	• 2 USB 2.0 ports
Console Port	• 1 RJ-45
Expansion Slot	• Reserved for future use

### Performance

Maximum Access Points per Unit	• 64/ 256 <sup>1</sup> (default/ upgrade)
--------------------------------	---

Maximum Access Points per peer group	• 256/ 1024 <sup>1</sup> (default/ upgrade)	
Concurrent Captive Portal Authentication Users	• 3072	
<b>Access Point Management</b>		
Model of Managed APs	<ul style="list-style-type: none"> <li>• DWL-8610AP</li> <li>• DWL-8600AP</li> <li>• DWL-6600AP</li> </ul>	<ul style="list-style-type: none"> <li>• DWL-3600AP</li> <li>• DWL-2600AP</li> </ul>
AP Discovery & Control	Layer-2	Layer-3
AP Monitoring	<ul style="list-style-type: none"> <li>• Managed AP</li> <li>• Rogue AP</li> </ul>	<ul style="list-style-type: none"> <li>• Authentication Fail AP</li> <li>• Standalone AP</li> </ul>
Client Monitoring	<ul style="list-style-type: none"> <li>• Authenticated Client</li> <li>• Rogue Client</li> </ul>	<ul style="list-style-type: none"> <li>• Authentication Fail Client</li> <li>• Ad-hoc Client</li> </ul>
Centralized RF/ Security Policy Management	• Supported	
<b>Roaming</b>		
Fast Roaming	• Supported	
Intra-controller/ Inter-controller Roaming	• Supported	
Intra-subnet/ Inter-subnet Roaming	• Supported	
<b>Security</b>		
Wireless Security	• WPA Personal/Enterprise	• WPA2 Personal/Enterprise
Wireless Intrusion Detection & Prevention System (WIDS)	• Rogue and Valid AP Classification	• Rogue AP Mitigation
LAN Security	• 802.1x port-based access control and guest VLAN	
Authentication	• Captive Portal	• MAC Authentication
<b>VLAN</b>		
VLAN Group	• Up to 255 entries	
802.1q VLAN Tagging	• Supported	
Subnet-based VLAN	• Supported	
Port-based VLAN	• Supported	
<b>User Account Management</b>		
Permanent Account Authentication Method	<ul style="list-style-type: none"> <li>• Local Database</li> <li>• External RADIUS</li> <li>• External LDAP</li> </ul>	<ul style="list-style-type: none"> <li>• External POP3</li> <li>• External Windows Active Directory (wired only)</li> </ul>
Temporary Account Authentication Method Local Database	• Local Database	
Temporary Account Creation	• Single or batch account generation by system with customized active or usage expired time	
Payment Gateway	<ul style="list-style-type: none"> <li>• Authorize.net</li> <li>• Paypal</li> </ul>	<ul style="list-style-type: none"> <li>• SecurePay</li> <li>• World Pay</li> </ul>

## DWC-2000 Unified Wireless Controller

System Management	
Web-based User Interface	• HTTP
Command Line	• Supported
SNMP	• v1, v2c, v3
Physical/Environmental	
Power Supply	• 100-240 V AC, 50-60 Hz Internal power supply
Max. Power Consumption	• 26.95 W
Dimensions	• 17.3 x 12.2 x 1.73 inches (440 x 310 x 44 mm)
Operating Temperature	• 32 to 104 °F (0 to 40 °C)
Storage Temperature	• -4 to 158 °F (-20 to 70 °C)
Operating Humidity	• 5% to 95%, Non-condensing
Emission (EMI)	• FCC Class A, CE Class A, C-Tick, IC
Safety	• cUL, LVD (EN60950-1)
Warranty Information	
Warranty	• Limited Lifetime <sup>2</sup>
Ordering Information	
<i>Part Number</i>	<i>Description</i>
DWC-2000	Unified Wireless Controller
Compatible D-Link Wireless Access Points	
DWL-8610AP	Unified Concurrent Dual-band Access Point 802.11a/b/g/n/ac
DWL-8600AP	Unified Concurrent Dual-band Access Point 802.11a/b/g/n
DWL-6600AP	Unified Concurrent Dual-band Access Point 802.11a/b/g/n
DWL-3600AP	Unified Single-band Access Point 802.11b/g/n
DWL-2600AP	Unified Single-band Access Point 802.11b/g/n
AP License Upgrades	
DWC-2000-AP32-LIC	Enables management of 32 additional APs
DWC-2000-AP64-LIC	Enables management of 64 additional APs
DWC-2000-AP128-LIC	Enables management of 128 additional APs

<sup>1</sup>The number of additional APs available for management depends on your license type.

<sup>2</sup>Limited Lifetime Warranty available only in the USA.

Updated October 2014 v1

### For more information

U.S.A. | 17955 Mt. Herrmann Street | Fountain Valley, CA 92708 | 800.326.1688 | dlink.com

© 2014 D-Link. All Rights Reserved. D-Link and the D-Link logo are trademarks or registered trademarks of D-Link. Other trademarks or registered trademarks are the property of their respective owners.

Visit [www.dlink.com](http://www.dlink.com) for more details.

**D-Link**<sup>®</sup>  
Building Networks for People