



Omni-Directional
Motion Detection



mydlink® Home
App Support



Push Alert
Notifications



WPS & Mobile App
for Easy Setup



DCH-S150

WI-FI MOTION SENSOR

mydlink® Connected Home Series

Features

Sensor

- PIR sensor with up to 26 feet detection range
- 2 internal omni-directional antennas

Ease of Use

- Connects to your home Wi-Fi network without requiring an additional hub
- One-piece wall-plug design is compact and does not require additional power cables
- WPS support for easy wireless connection
- Mobile app enabled setup

Convenient Control with mydlink® Support

- mydlink® Home app support for iPhone, iPad, and Android devices¹
- Control and manage remotely using just your mobile device

Smart Home Device Compatibility

- Works with other D-Link Connected Home devices such as the Wi-Fi Siren, Smart Plugs, Water Sensor and Connected Home Series Wi-Fi Cameras
- Works with IFTTT-enabled apps & products

Overview

The mydlink® Wi-Fi Motion Sensor (DCH-S150) is a small, easy-to-use, compact device with a built-in PIR sensor that lets you know when movement has been detected at home or the office. Get push notifications on your smartphone when your pet leaves your home, when your child opens the medicine cabinet, or when the garage door is opened. Pair with the mydlink® Smart Plug to automate devices even in off-limits areas so you're always in control. Just download the free mydlink® Home app, push the WPS set up button on the sensor and you can create different actions to turn on/off your devices connected to mydlink® Smart Plugs.

Create Your Smart Home with mydlink® Home Products

D-Link Connected Home products work together with hundreds of device combinations to secure, connect and automate your home. Control and manage your Wi-Fi Motion Sensor through the mydlink® Home app using your tablet or mobile phone, no matter where you are, or pair your motion sensor with other D-Link Connected Home products to turn on lights when motion is detected, begin recording clips² as soon as someone walks through the door and more³.

A Connected Home That's In Tune With You

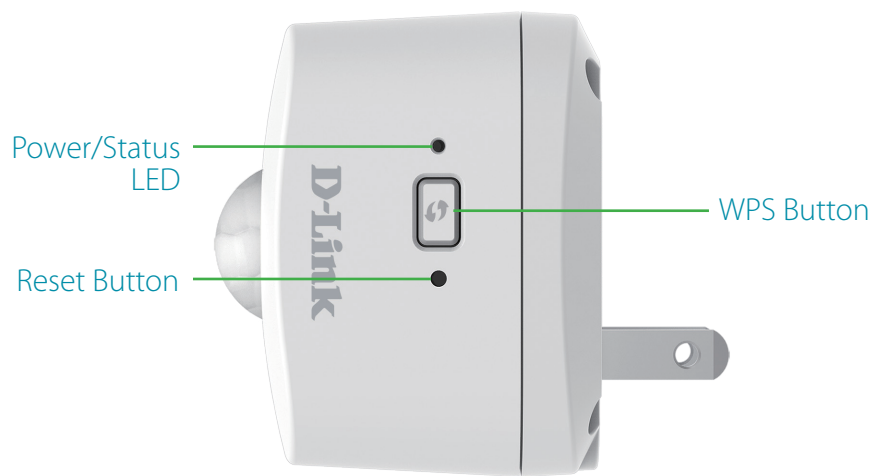
With IFTTT support, it's easy to pair your Wi-Fi Motion Sensor with other IFTTT-enabled products and apps to customize your smart home. Just visit <https://ifttt.com> to add a recipe or create your own!

Front View



Motion
Sensor

Side View



Power/Status
LED

Reset Button

WPS Button

Technical Specifications

General

Device Interface	<ul style="list-style-type: none"> Wireless 802.11n/g/b Power/Status LED 	<ul style="list-style-type: none"> WPS Button Reset Button
PIR Sensor	<ul style="list-style-type: none"> 26 feet detection range 	
Wireless Frequency Range	<ul style="list-style-type: none"> 2.4 GHz to 2.4835 GHz 	
Antennas	<ul style="list-style-type: none"> Two omni-directional internal antennas 	
Plug Type	<ul style="list-style-type: none"> Region dependent 	

Functionality

Security	<ul style="list-style-type: none"> Wi-Fi Protected Access (WPA/WPA2) 	<ul style="list-style-type: none"> Wi-Fi Protected Setup (WPS)
Mobile Support	<ul style="list-style-type: none"> mydlink® Home app for iOS and Android 	<ul style="list-style-type: none"> Requires iOS 7 and above, Android 4.1 and above

IFTTT

Compatibility	<ul style="list-style-type: none"> The mydlink® Wi-Fi Motion Sensor (DCH-S150) is compatible with any IFTTT-enabled product and app 	<ul style="list-style-type: none"> IFTTT Recipes and applicable Triggers/Actions can be found at https://ifttt.com/dlink_motion_sensor
---------------	--	---

Physical

Use	<ul style="list-style-type: none"> Indoor only 	
Weight	<ul style="list-style-type: none"> 0.18 lbs 	
Power Input	<ul style="list-style-type: none"> 100 to 125V AC, 50/60 Hz 	
Temperature	<ul style="list-style-type: none"> Operating: 32 to 104 °F (0 to 40 °C) 	<ul style="list-style-type: none"> Storage: -4 to 149 °F (-20 to 65 °C)
Humidity	<ul style="list-style-type: none"> Operating: 10% to 90% non-condensing 	<ul style="list-style-type: none"> Storage: 5% to 95% non-condensing
Certifications	<ul style="list-style-type: none"> FCC 	<ul style="list-style-type: none"> UL
Dimensions	<ul style="list-style-type: none"> 2.13 x 1.71 x 2.28 inches (W x D x H) 	

Package Contents	• Wi-Fi Motion Sensor (DCH-S150)	• Quick install card
Warranty	• 1 Year Limited	• Warranty and regulatory details can be found at http://support.dlink.com/warranty
Order Information		
Part Number	Description	
DCH-S150	mydlink® Wi-Fi Motion Sensor	

¹The DCH-S150 is not supported by the mydlink.com web portal, mydlink Lite or mydlink + app.

²Use of audio or video equipment for recording the image or audio of a person without their knowledge and consent is prohibited in certain states or jurisdictions. The end-user assumes all liability for compliance with applicable state, local and federal laws.

³Additional Connected Home devices sold separately. Visit <http://us.dlink.com/home-solutions/connected-home> for more information on available products.

For more information

U.S.A. | 17595 Mt. Herrmann Street | Fountain Valley, CA 92708 | 800.326.1688 | dlink.com

©2016 D-Link Corporation/D-Link Systems, Inc. All rights reserved. D-Link, the D-Link logo and mydlink logo are trademarks or registered trademarks of D-Link Corporation or its subsidiaries in the United States and/or other countries. Other trademarks or registered trademarks are the property of their respective owners. iPhone and iPad are registered trademarks of Apple Inc. Android is a trademark of Google Inc. Windows is a registered trademark of Microsoft Inc.

